

THE BALANCED PLAN FOR GROWTH: A COMPROMISE BUDGET FOR NEVADA

**State Controller Ron Knecht,
Assemblyman Jim Wheeler and
Assistant Controller Geoffrey Lawrence**

**Presentation 14 May 2015 to Nevada
Assembly Taxation Committee – Room
4100, Nevada Legislature**

BALANCED PLAN FOR GROWTH GOALS AND APPROACH – PART I

- 1) To secure the education, human services and other state public services goals of Nevadans
- 2) To foster economic growth – So, no new or increased taxes, and the sunset taxes should actually expire
- 3) BPfG is a vehicle for compromise to allow budget completion without a special legislative session

BALANCED PLAN FOR GROWTH GOALS AND APPROACH – PART II

- 4) BPfG works both revenues and expenses to close \$1.1 billion gap (Economic Forum revenues versus Governor's recommended budget)
- 5) BPfG actually increases current total state spending, but at a rate lower than the growth rate of the Nevada economy
- 6) BPfG presented originally as a work in progress, which it remains; this is version 2.0 (much improved, as with any version 2.0)

KEY BACKGROUND FACTS & STATISTICS – FROM COMPREHENSIVE ANNUAL FINANCIAL REPORTS

- 1) State spending has grown 10% in real terms per person in last 10 years – that is, over and above the state spending growth caused by inflation and population growth, spending has grown 10% more
- 2) Relative to Nevada's economy, state revenues have grown 9% in 2004-2014 decade, including 19% since 2008
- 3) Conclusion: State of Nevada has a spending problem, not a revenue problem

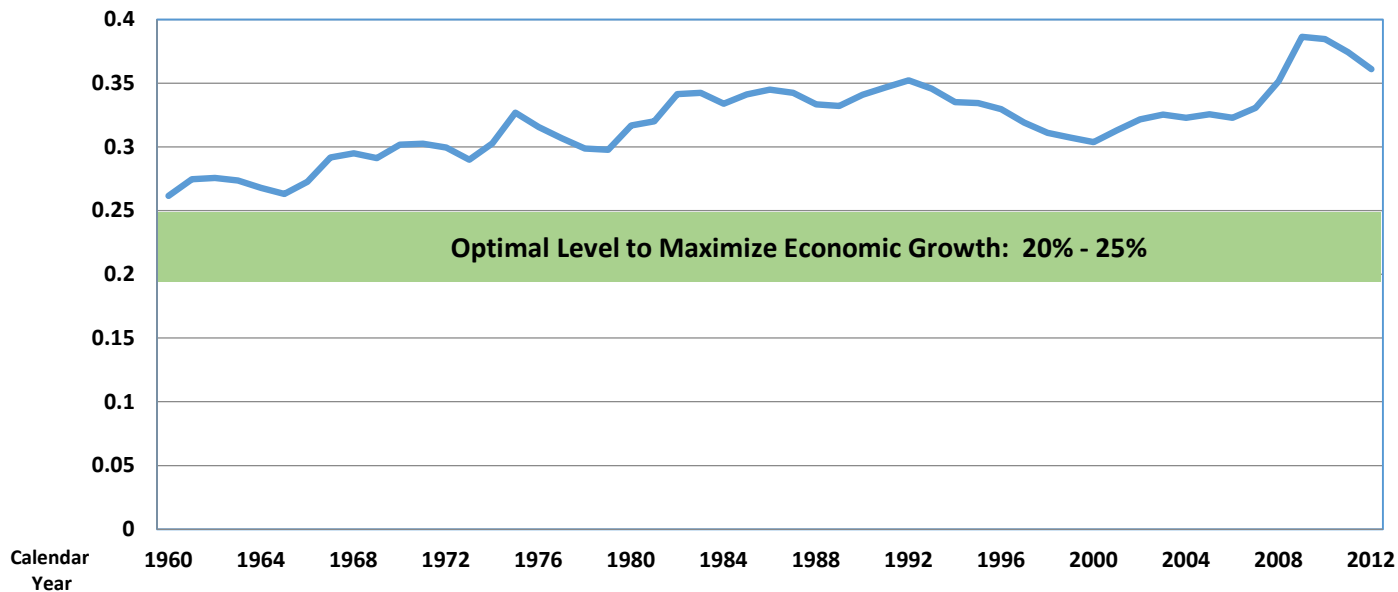
KEY BACKGROUND FACTS: FOR GROWTH, NEW AND INCREASED TAXES SHOULD BE AVOIDED

- 1) Government in US has grown greatly over 50+ years relative to our economy (and thus as a factor in people's lives), from mid-20% range to high-30% range – a truly unsustainable trend
- 2) Empirical studies show that the range of government spending to GDP that serves the public interest (i.e., maximizes growth and thus maximizes overall human well-being) is 20% - 25%
- 3) State and local government have been as much a part of the excess growth of government as has the federal government
- 4) Nevada has been as much a part of the problem as any state, with its tax burden having grown to 25th or 26th among states, depending on how measured – No longer a low-tax state

CONSISTENT GROWTH OF GOVERNMENT VERSUS UNITED STATES ECONOMY (GDP)

U.S. Public-sector Spending/GDP Ratio, 1960-2012 Includes Federal & State/Local Total Net Spending

Ron Knecht 21 June 2013, using U.S. Bureau of Economic Analysis Data



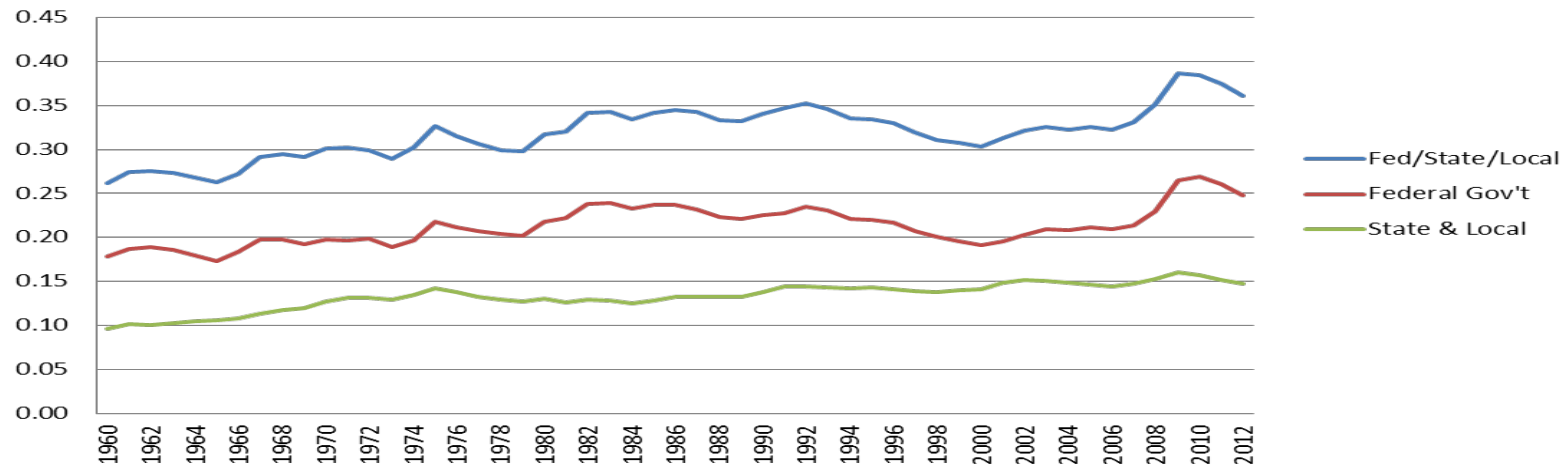
Balanced Plan for Growth – Knecht/Wheeler/Lawrence – Assembly Taxation 14 May 2015

CONSISTENT GROWTH OF GOVERNMENT VS. GDP – STATE/LOCAL AS MUCH AS FEDERAL

Balanced Plan for Growth – Knecht/Wheeler/Lawrence – Assembly Taxation 14 May 2015
Page 7

U.S. Government Spending vs. GDP, 1960-2012 Federal, State/Local and Total Components

Ron Knecht 22 June 2013 with Data from U.S. Bureau of Economic Analysis



SUMMARY OF KEY NUMBERS FOR BUDGET

- 1) **Expected 2015-17 revenues, per Economic Forum: \$6.33billion → \$6.16billion**
- 2) **General fund spending in 2013-15: \$6.60billion**
- 3) **Governor's recommended spending for 2015-17: \$7.31billion**
- 4) **Balanced Plan for Growth proposed general fund spending for 2015-17: \$6.92billion**

BALANCED PLAN FOR GROWTH SPENDING ISSUES

- 1) Block grants to replace K-12 categorical funding**
- 2) Process used to generate cuts other than K-12 blocks**
- 3) Higher education: LV med school, community colleges**
- 4) Health & human services: The storm next time**
- 5) Information technology: maintenance & upgrades**
- 6) State employees held harmless; ends furloughs**
- 7) Summary table of cuts by budget area**

Historic Nevada Spending by Function

Balanced Plan for Growth – Knecht/Wheeler/Lawrence – Assembly Taxation 14 May 2015

Page 10

	FY12	FY13	FY14	FY15
Elected Officials	\$95,745,355	\$97,937,668	\$99,986,261	\$101,350,272
Finance & Administration	\$41,046,726	\$40,981,174	\$39,332,807	\$52,966,226
Education:				
Higher Education	\$473,255,848	\$473,257,970	\$479,590,988	\$491,663,228
K-12	\$1,151,272,994	\$1,177,015,140	\$1,286,393,103	\$1,261,243,105
Other Education	\$549,977	\$341,135	\$1,364,681	\$1,413,969
Subtotal Education	\$1,625,078,819	\$1,650,614,245	\$1,767,348,772	\$1,754,320,302
Commerce & Industry	\$45,818,310	\$34,075,265	\$47,374,019	\$47,753,576
Human Services	\$979,134,087	\$958,585,228	\$1,005,147,981	\$1,046,498,292
Public Safety	\$291,160,994	\$290,842,405	\$289,673,219	\$289,421,829
Infrastructure	\$22,677,521	\$22,802,159	\$23,532,139	\$20,934,254
Special Purpose Agencies	\$4,065,233	\$4,044,884	\$5,225,781	\$5,231,491
Total	\$3,104,727,045	\$3,099,883,028	\$3,277,620,979	\$3,318,476,242

Governor's Recommendation and Balanced Plan for Growth by Function

Balanced Plan for Growth – Knecht/Wheeler/Lawrence – Assembly Taxation 14 May 2015
Page 11

	Gov Rec FY16	Gov Rec FY17	BpFG FY16	BpFG FY17
Elected Officials	\$126,003,810	\$129,417,800	\$114,153,463	\$118,785,113
Finance & Administration	\$44,411,481	\$42,180,534	\$35,587,371	\$34,957,445
Education:				
Higher Education	\$527,440,099	\$536,863,566	\$504,425,352	\$492,857,158
K-12	\$1,414,200,191	\$1,467,452,698	\$1,428,453,526	\$1,399,994,660
Other Education	\$304,254	\$309,064	\$304,254	\$309,064
Subtotal Education	\$1,941,944,544	\$2,004,625,328	\$1,933,183,132	\$1,893,160,882
Commerce & Industry	\$73,966,167	\$53,948,508	\$36,759,174	\$37,557,682
Human Services	\$1,048,476,426	\$1,141,825,952	\$989,354,039	\$1,049,045,292
Public Safety	\$312,655,870	\$319,049,104	\$301,422,353	\$308,184,882
Infrastructure	\$32,447,016	\$31,563,985	\$27,348,073	\$23,138,134
Special Purpose Agencies	\$5,621,567	\$6,015,271	\$7,394,909	\$7,468,613
Total	\$3,585,526,881	\$3,728,626,482	\$3,445,202,514	\$3,472,298,042

BALANCED PLAN FOR GROWTH SPENDING, K-12: BLOCK GRANTS REPLACE CATEGORICAL GRANTS

- 1) State spending on K-12 schools has grown faster than everything but HHS in last decade: 23% increase in addition to increased amounts for inflation and population growth**
- 2) Categorical grants presently total \$549million; Governor recommends adding \$424million, for \$974million total**
- 3) BPfG consolidates categorical grants into a single block grant of \$665million, for savings of \$309million**
- 4) Flexibility: Allows each K-12 district to spend these monies as needed at each school – not one size fits all template**
- 5) Accountability and effectiveness problems with K-12 categorical grants -- Solution: Required compliance audits and performance reporting**

BALANCED PLAN FOR GROWTH SPENDING

PROCESS USED TO GENERATE NON-K-12 SPENDING

- 1) Done line by line, starting with 2011-13; then apply three screens
- 2) Start with FY12 and FY13 and increase each amount by 10% for inflation and population growth to current biennium
- 3) Screen resulting amounts versus FY14 and FY15 levels, restoring many lines to at least those levels
- 4) Screen the resulting amounts versus Governor recommended levels for FY16 and FY17 to determine whether increases needed
- 5) Add back specific enhancements too important to defer (e.g.,IT)
- 6) Not carved in stone: A starting point for negotiation and a template to use with budgets already closed

BALANCED PLAN FOR GROWTH SPENDING, NSHE

- 1) **BPfG proposed NSHE \$992million total is higher than NSHE requested and an increase versus current biennium's \$971million**
- 2) **Does not include the full incentive amounts Governor recommended adding to NSHE request**
- 3) **Funds proposed UNLV medical school at Governor's recommended level**
- 4) **Fair to community colleges: full bridge funding – they will not survive reasonably without it**

BALANCED PLAN FOR GROWTH SPENDING, HHS

- 1) **Health & Human Services spending in Nevada has grown faster than anything else: 37% increase in last decade in addition to increases for inflation and population growth**
- 2) **Increases in entitlement programs driven much by federal mandates and funded significantly with federal grants**
- 3) **Medicaid has grown to be the second largest item in Nevada budget – enrollments doubled from 300,000 in 2013 to 600,000 today**
- 4) **In 2017-19 biennium, federal support for ACA-driven Medicaid expansion begins to decline – huge liability**
- 5) **BPfG covers all eligible Medicaid beneficiaries, but holds provider reimbursements to current rates, saving \$60million**

BALANCED PLAN FOR GROWTH SPENDING: INFO TECH MAINTENANCE AND DEFERRED UPGRADES

- 1) Since the Great Recession and resulting spending constraints, state agencies have been operating with legacy IT and related systems: Many are obsolete, now requiring high staff levels and costs while delivering poor service
- 2) Some systems approaching or already at the end of vendor support – serious risks of system/service breakdowns and high additional costs if not replaced very soon – akin to deferred maintenance problems
- 3) State spending has been deferred longer than reasonable, so BpFG includes all \$20M+ of these enhancements recommended by Governor

BALANCED PLAN FOR GROWTH SPENDING

STATE EMPLOYEES HELD HARMLESS VS. GOV. REC.

- 1) **BPfG would end all state employee furloughs (currently six days per year, for 2.3% pay cut)**
- 2) **Previous state compensation cuts have roughly mirrored the misfortunes of taxpayers as a group; but poor recovery has now brought taxpayers back to pre-recession income levels**
- 3) **So, it's reasonable also to restore state employees to same status as taxpayers by ending furloughs and fully restoring merit pay for classified employees**
- 4) **Version 2.0 of BPfG thus does not include changes to PERS and PEBP included in version 1.0 – but instead holds state employees harmless versus Governor's budget and gives them a net increase in compensation**

BPF_G Spending by Department (1 of 3)

Balanced Plan for Growth – Knecht/Wheeler/Lawrence – Assembly Taxation 14 May 2015

Page 18

	Actual FY14	Work Plan FY15	Gov Rec FY16	Gov Rec FY17	BPF _G FY16	BPF _G FY17
Adjutant General	\$3,381,919	\$3,413,043	\$4,088,298	\$4,201,420	\$4,030,474	\$4,143,596
Attorney General's Office	\$15,646,925	\$16,202,186	\$18,526,332	\$17,367,063	\$15,002,218	\$15,317,867
Colorado River Commission	\$0	\$0	\$0	\$0	\$0	\$0
Commission on Ethics	\$238,104	\$234,376	\$163,865	\$162,472	\$163,865	\$162,472
Commission on Mineral Resources	\$0	\$0	\$0	\$0	\$0	\$0
Commission on Peace Officer's Standards & Training	\$0	\$0	\$0	\$0	\$0	\$0
Commission on Post Secondary Education	\$311,771	\$318,504	\$304,254	\$309,064	\$304,254	\$309,064
Controller's Office	\$4,427,566	\$4,369,629	\$6,363,454	\$4,789,907	\$6,038,144	\$4,667,787
Deferred Compensation	\$0	\$0	\$0	\$0	\$0	\$0
Department of Administration	\$8,790,326	\$21,075,123	\$14,414,516	\$12,470,385	\$7,910,290	\$6,684,772
Department of Agriculture	\$2,176,979	\$2,152,765	\$3,570,305	\$3,490,446	\$2,162,874	\$2,129,970
Department of Business and Industry	\$2,796,747	\$2,850,923	\$1,786,833	\$2,250,538	\$1,651,319	\$1,681,926
Department of Conservation and National Resources	\$21,869,577	\$19,380,775	\$29,887,055	\$29,334,586	\$26,820,045	\$22,606,522
Department of Corrections	\$243,905,327	\$243,402,555	\$259,477,639	\$264,586,176	\$257,018,735	\$262,981,053

BpFG Spending by Department (2 of 3)

Balanced Plan for Growth – Knecht/Wheeler/Lawrence – Assembly Taxation 14 May 2015

Page 19

	Actual FY14	Work Plan FY15	Gov Rec FY16	Gov Rec FY17	BpFG FY16	BpFG FY17
Department of Education	\$1,299,835,798	\$1,247,050,410	\$1,413,800,191	\$1,467,452,698	\$1,428,053,526	\$1,399,994,660
DETR	\$3,836,482	\$3,829,643	\$5,576,052	\$5,694,463	\$4,933,671	\$4,991,405
DHHS	\$993,651,392	\$1,050,328,756	\$1,042,900,374	\$1,136,131,489	\$984,420,368	\$1,044,053,887
DMV	\$106,427	\$25,943	\$29,719	\$30,078	\$29,719	\$30,078
DPS	\$45,601,397	\$46,134,106	\$53,148,512	\$54,432,850	\$44,373,899	\$45,173,751
Department of Taxation	\$25,431,173	\$26,261,393	\$29,996,965	\$29,710,149	\$27,677,080	\$28,272,673
Department of Tourism and Cultrual Affairs	\$3,138,677	\$3,146,825	\$3,603,143	\$3,761,938	\$2,893,178	\$3,063,493
DOT	\$0	\$0	\$0	\$0	\$0	\$0
Department of Veterans Services	\$1,712,395	\$1,818,448	\$1,533,269	\$1,813,851	\$1,533,269	\$1,813,851
Department of Wildlife	\$494,765	\$494,765	\$728,795	\$718,233	\$528,028	\$531,612
Gaming Control Board	\$26,090,391	\$25,919,405	\$30,542,040	\$30,936,237	\$27,325,109	\$27,913,127
Governor's Office	\$8,434,835	\$8,961,056	\$11,255,166	\$12,850,027	\$7,479,756	\$7,639,330
Governor's Office of Economic Development	\$13,171,225	\$13,683,658	\$34,463,846	\$13,509,349	\$2,726,694	\$2,769,167
Judicial Branch	\$31,119,335	\$31,532,272	\$36,672,101	\$38,518,898	\$36,376,640	\$38,030,846
Judicial Discipline Commission	\$647,511	\$643,129	\$837,860	\$792,436	\$737,622	\$753,495

BpFG Spending by Department (3 of 3)

Balanced Plan for Growth – Knecht/Wheeler/Lawrence – Assembly Taxation 14 May 2015

Page 20

	Actual FY14	Work Plan FY15	Gov Rec FY16	Gov Rec FY17	BpFG FY16	BpFG FY17
LCB	\$30,564,489	\$30,246,658	\$31,356,836	\$30,898,693	\$30,553,511	\$30,898,693
Lt. Gov's Office	\$494,211	\$508,152	\$552,817	\$587,758	\$502,763	\$512,818
NSHE	\$479,610,988	\$491,683,228	\$526,323,488	\$535,736,286	\$503,308,741	\$491,729,878
PEBP	\$0	\$0	\$0	\$0	\$0	\$0
PERS	\$0	\$0	\$0	\$0	\$0	\$0
PUC	\$0	\$0	\$0	\$0	\$0	\$0
Secretary of State's Office	\$13,288,885	\$13,945,657	\$19,798,815	\$23,030,548	\$16,822,379	\$20,381,806
Silver State Health Insurance Exchange	\$0	\$0	\$0	\$0	\$0	\$0
State Public Charter School Authority	\$750,000	\$0	\$400,000	\$0	\$400,000	\$0
TRPA	\$1,118,532	\$1,107,532	\$1,831,166	\$1,511,166	\$1,831,166	\$1,511,166
Treasurer's Office	\$741,099	\$721,515	\$476,564	\$419,998	\$476,564	\$419,998
Western Interstate Commission on Higher Education	\$1,052,910	\$1,095,465	\$1,116,611	\$1,127,280	\$1,116,611	\$1,127,280
Total	\$3,284,438,158	\$3,312,537,895	\$3,585,526,881	\$3,728,626,482	\$3,445,202,514	\$3,472,298,042

BALANCED PLAN FOR GROWTH REVENUE ISSUES

- 1) **BPfG version 2.0 revenue measures do not include local-government property tax diversions nor state employee PERS/PEBP changes of version 1.0**
- 2) **BPfG version 2.0 revenues include only two minor new sources: \$39million of excess fund and closed-program sweeps, plus \$31million of mining tax deduction limits and prepayments – so \$70million in FY2016**
- 3) **Major new revenues (\$744million) gained from bringing local government employees half way to parity with state employees in employee PERS contributions**

Balanced Plan for Growth Revenue Summary

Balanced Plan for Growth – Knecht/Wheeler/Lawrence – Assembly Taxation 14 May 2015
Page 22

	FY16	FY17	Total
Economic Forum Projection (5/1)	\$2,989,236,235	\$3,165,980,185	\$6,155,216,420
Fund Sweeps	\$36,432,331	\$2,444,622	\$38,876,953
Mining deductions and pre-pay (extend AB 561 and SB 493 from 2011 through FY17)	\$31,011,000	\$0	\$31,011,000
PERS Savings	\$359,237,029	\$382,587,436	\$741,824,464
Total	\$3,415,916,595	\$3,551,012,243	\$6,966,928,837

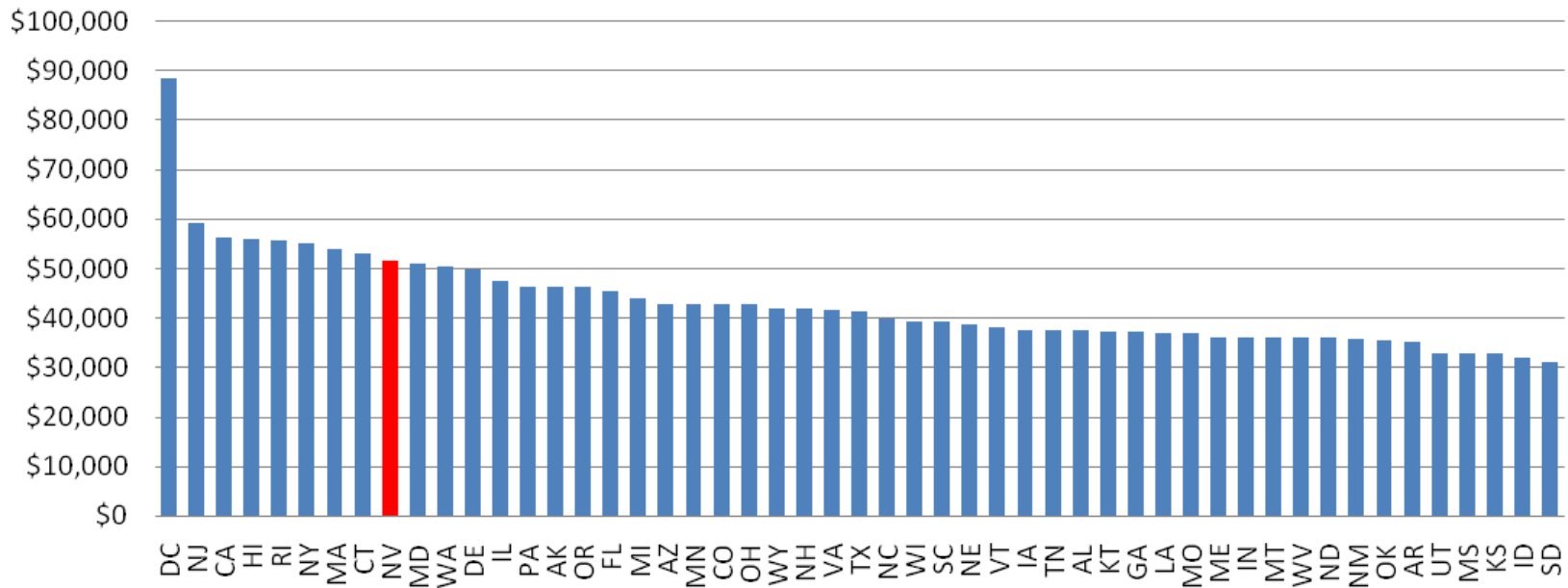
BPFG REVENUES: LOCAL GOV'T EMPLOYEE PERS

- 1) As shown in following graphs and in other studies and data, on average Nevada local-government employees' wage/salary compensation is roughly 8% - 11% above comparable state employee compensation**
- 2) Local-government employees' compensation is also much above comparable private-sector compensation in Nevada, while state compensation is much closer to market levels**
- 3) With 28% total retirement contributions (employer plus employee, non-public-safety employees), Nevada public-sector benefits exceed private sector and national levels; employment security and conditions values are also attractive; local-government employees' margins are much greater than those of state employees**

LOCAL GOVERNMENT WAGES BY STATE

Balanced Plan for Growth – Knecht/Wheeler/Lawrence – Assembly Taxation 14 May 2015
Page 24

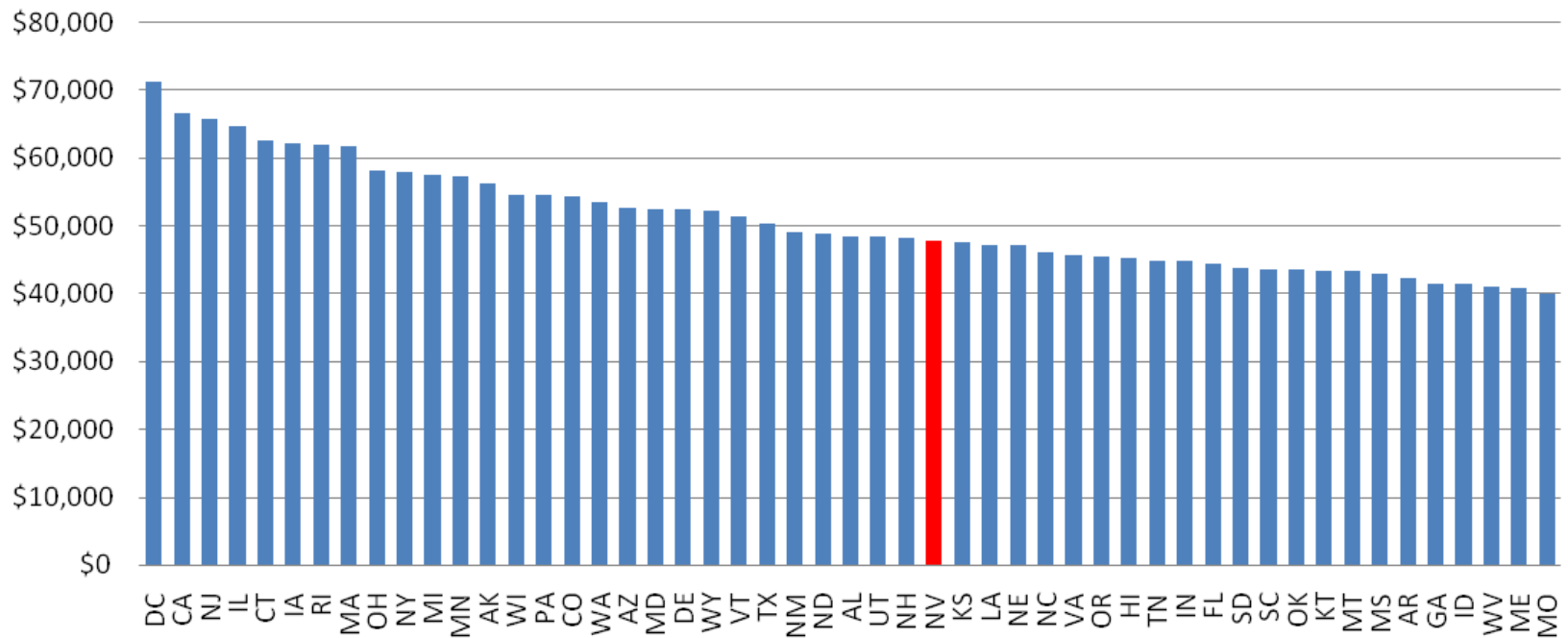
Annual Wages (Excluding Benefits) of Local Government Employees, 2013



STATE GOVERNMENT WAGES BY STATE

Balanced Plan for Growth – Knecht/Wheeler/Lawrence – Assembly Taxation 14 May 2015
Page 25

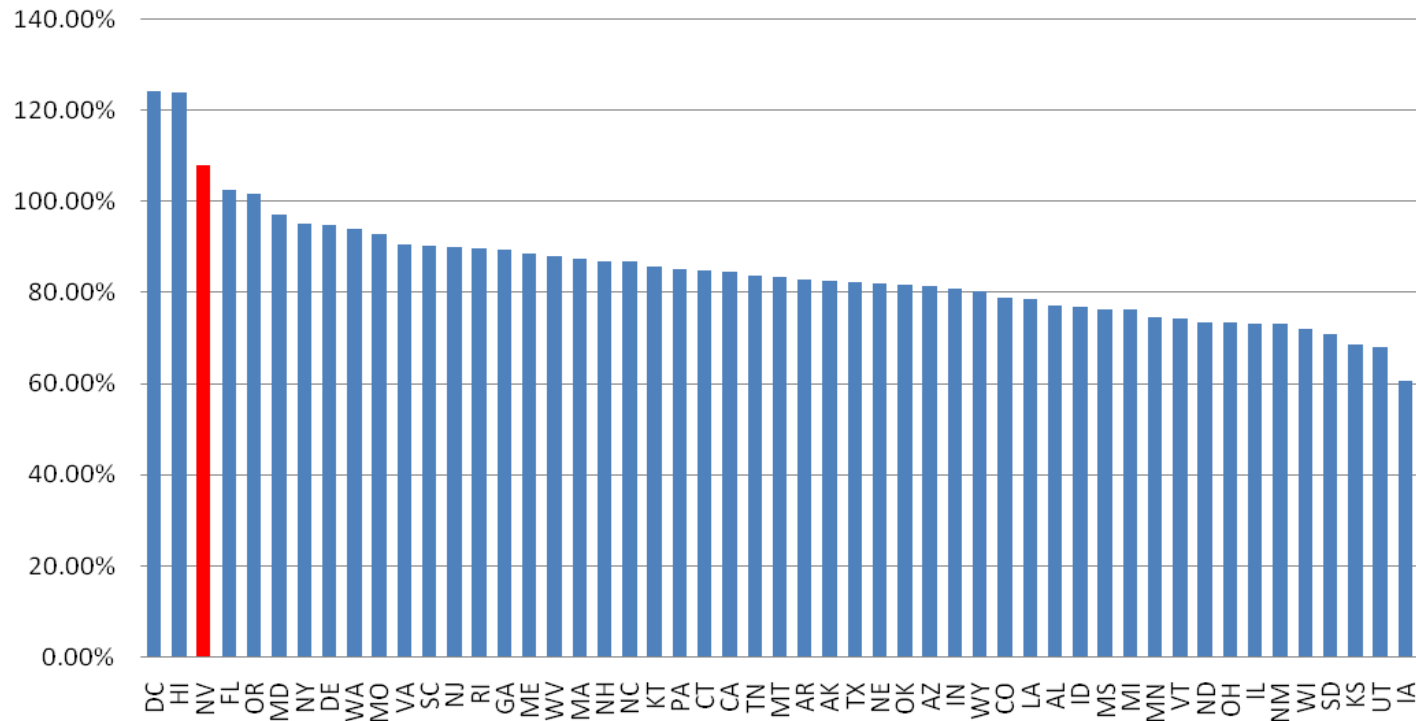
Annual Wages (Excluding Benefits) of State Employees, 2013



NEVADA ONE OF FEW STATES IN WHICH LOCAL GOVERNMENT PAYS BETTER THAN STATE

Balanced Plan for Growth – Knecht/Wheeler/Lawrence – Assembly Taxation 14 May 2015
Page 26

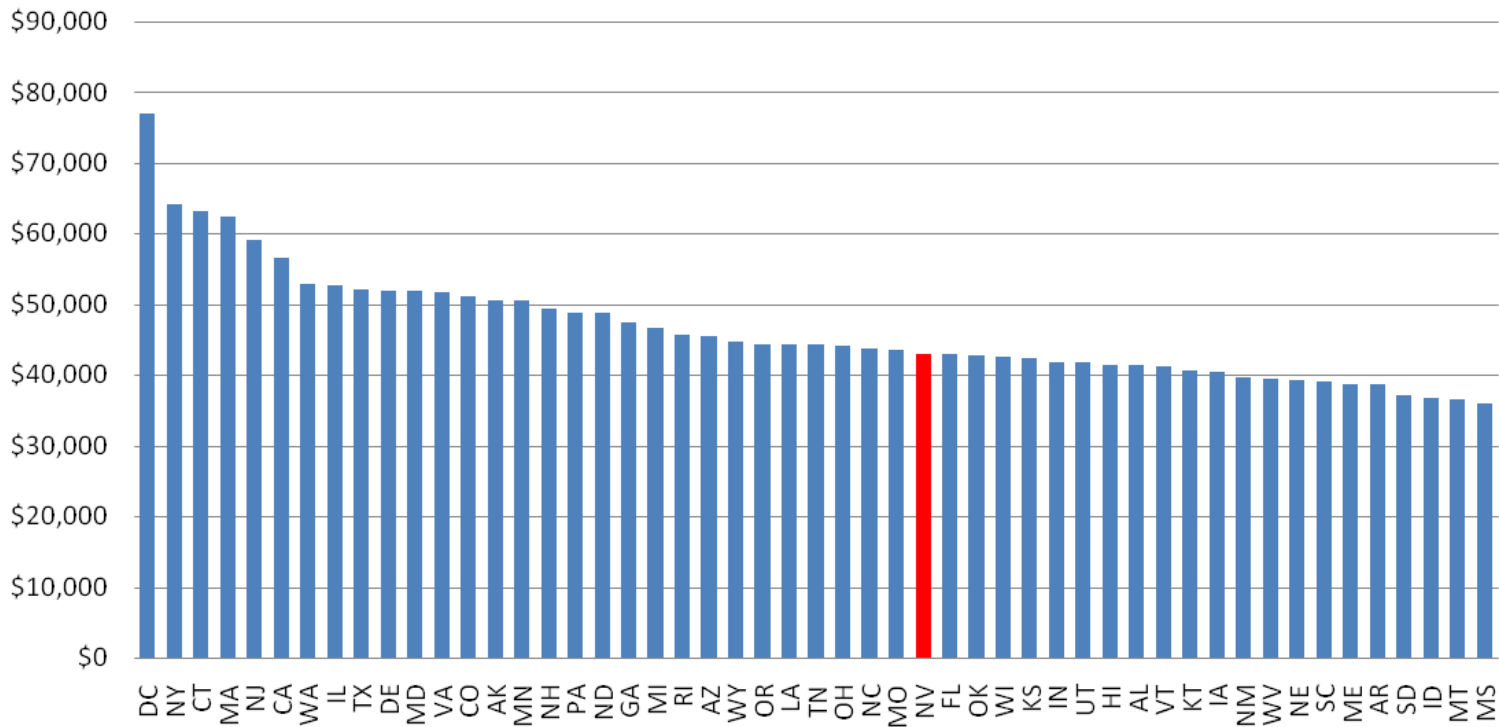
Local Government Wages as Percentage of State Government Wages, 2013



PRIVATE SECTOR WAGES BY STATE

Balanced Plan for Growth – Knecht/Wheeler/Lawrence – Assembly Taxation 14 May 2015
Page 27

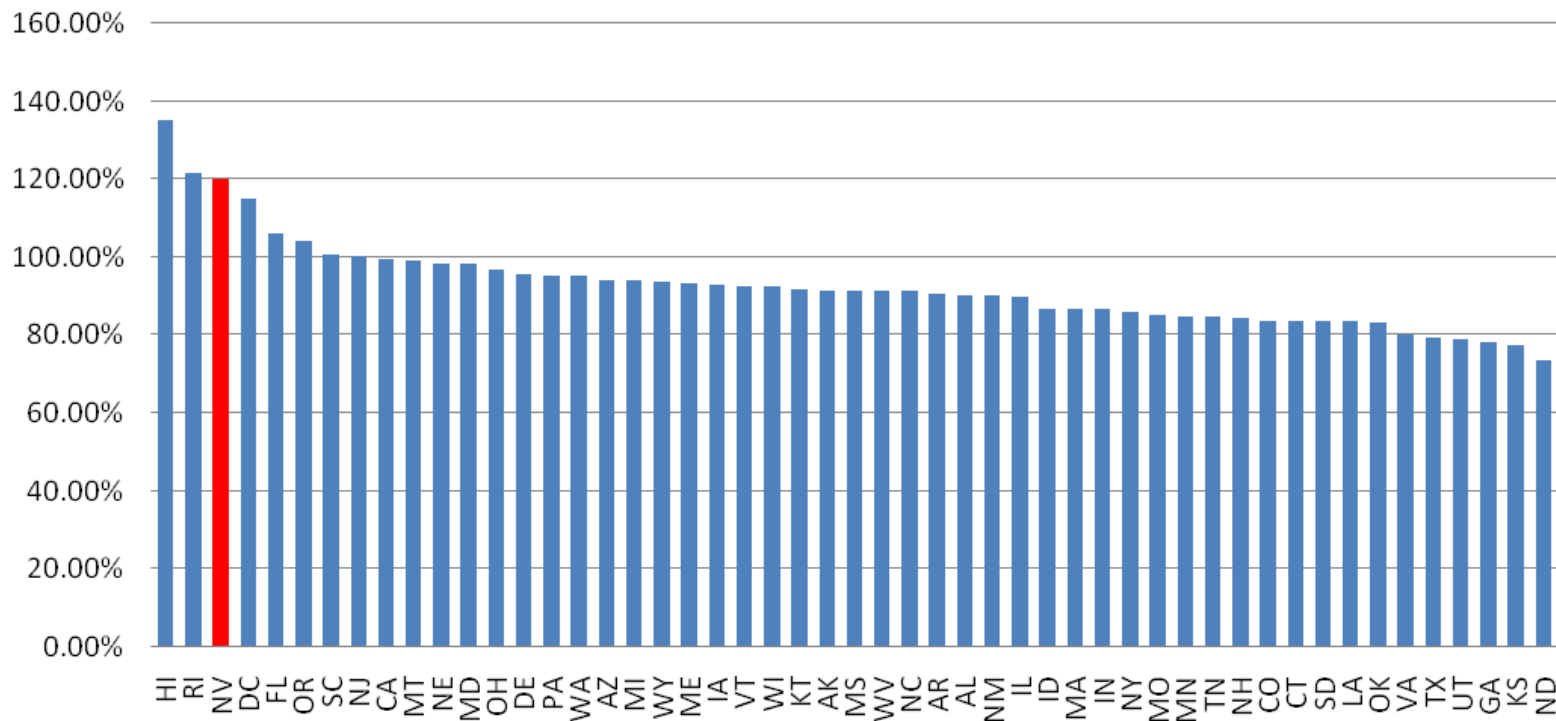
Annual Wages (Excluding Benefits) of Private-Sector Employees, 2013



NEVADA IS ONE OF A FEW STATES IN WHICH LOCAL GOVERNMENT PAYS BETTER THAN PRIVATE SECTOR

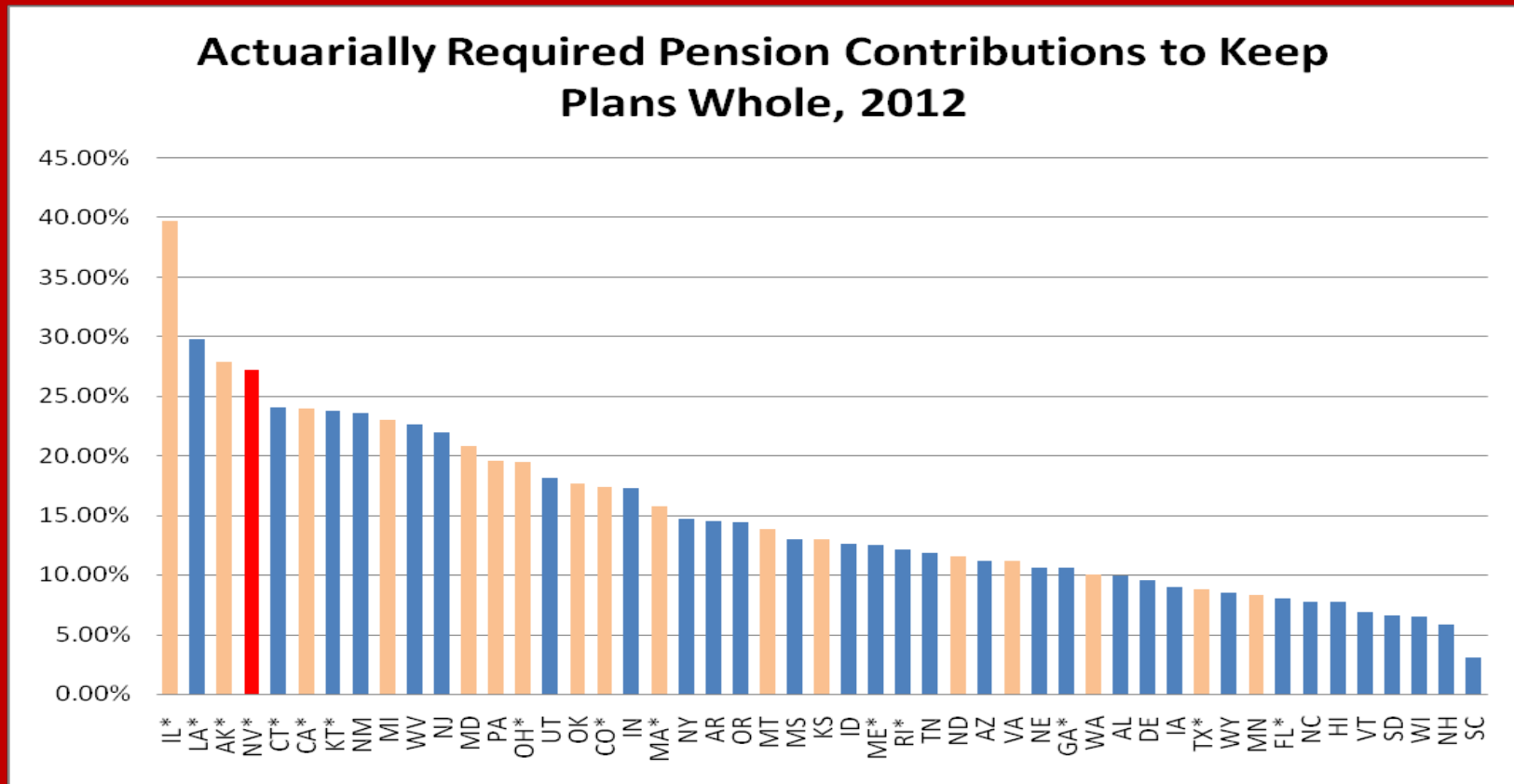
Balanced Plan for Growth – Knecht/Wheeler/Lawrence – Assembly Taxation 14 May 2015
Page 28

Local Government Wages as Percentage of Private-Sector Wages, 2013



NEVADA HAS ONE OF HIGHEST TOTAL PENSION CONTRIBUTION RATES

Balanced Plan for Growth – Knecht/Wheeler/Lawrence – Assembly Taxation 14 May 2015
Page 29



*Does not participate in Social Security

Orange = Past underfunding has increased current ARC

BPFG LOCAL GOVERNMENT EMPLOYEE PROPOSAL

- 1) Move local-government employee PERS contributions to parity with state employees' contributions over a few years**
- 2) Move half-way to parity now: 7% contribution for non-public-safety employees and 10.125% for public-safety employees (versus 28% and 40.5% total PERS contributions)**
- 3) Generates \$744million net state revenues**
- 4) BPfG is the only revenue proposal this session that passes with simple majority vote in each house (LCB General Counsel)**

CONCLUSION: BPFPG IS CONSISTENT WITH RECENT TRENDS AND NEVADA ECONOMIC GROWTH; GOVERNOR'S PROPOSAL IS NOT

Balanced Plan for Growth – Knecht/Wheeler/Lawrence – Assembly Taxation 14 May 2015
Page 31

General Fund: Historic and Proposed

